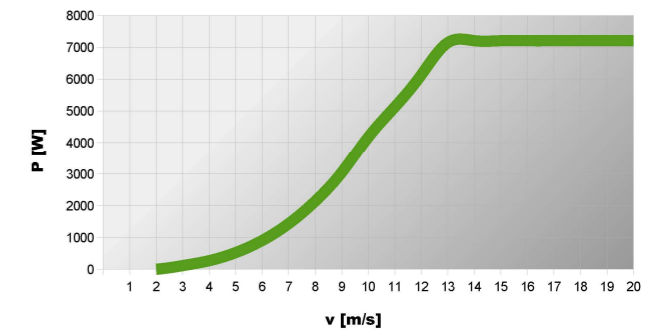
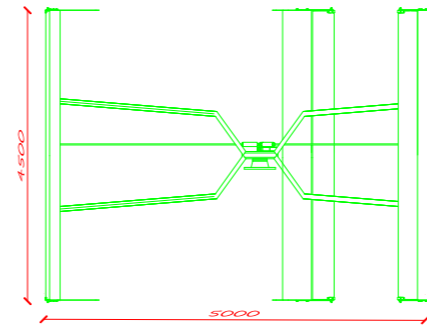


7.0 kW

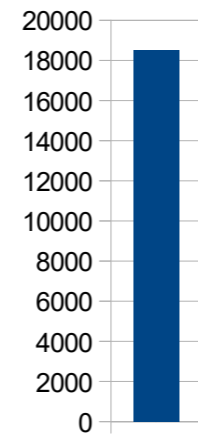
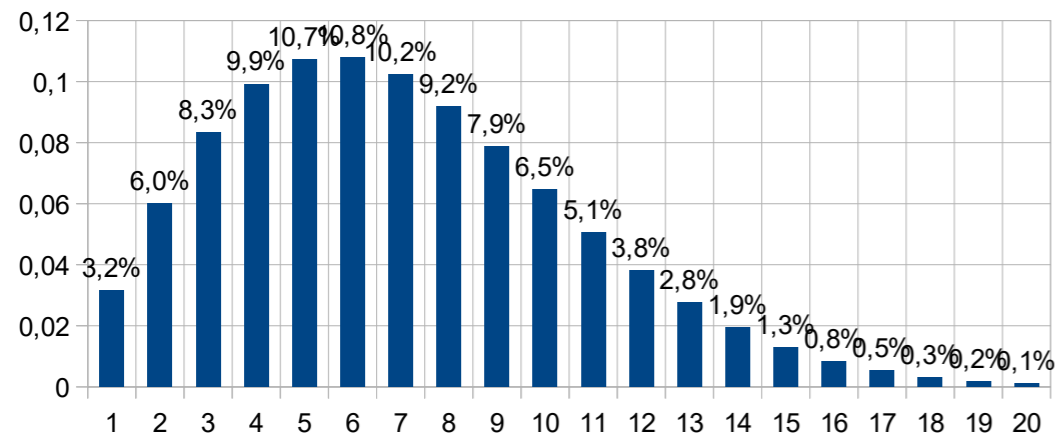
Swept Area 22.5mq

Rated Power (kW)
Rated Wind Speed (m/s)
Maximum Power (kWp @ 13 m/s)
Rotor Diameter (m)
Rotor Height (m)
Cut-in Wind Speed (m/s)
Cut-out Wind Speed (m/s)

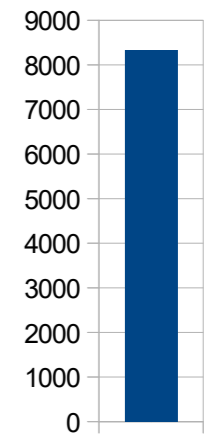
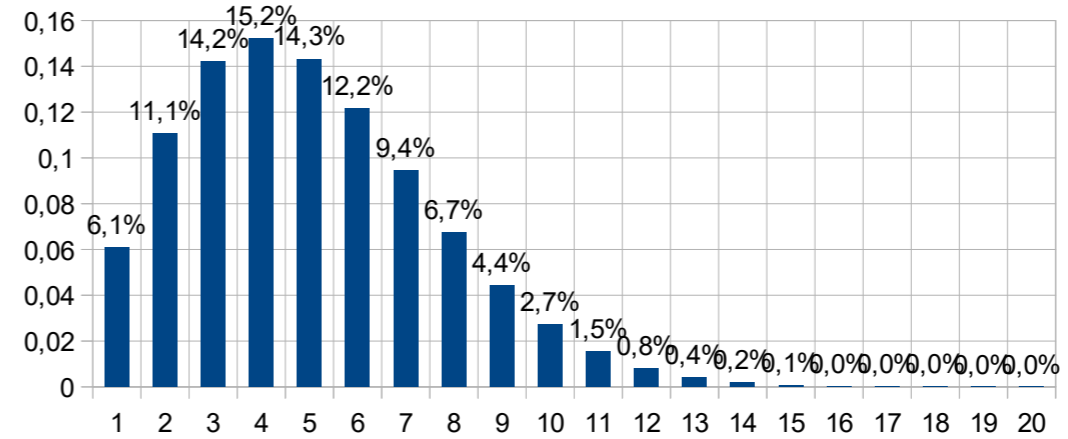
5.0
11
7.0
5
4.5
3
Self limiting



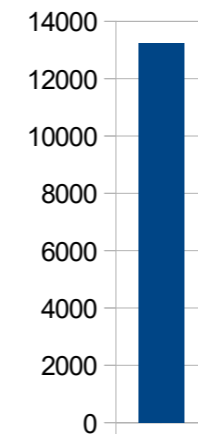
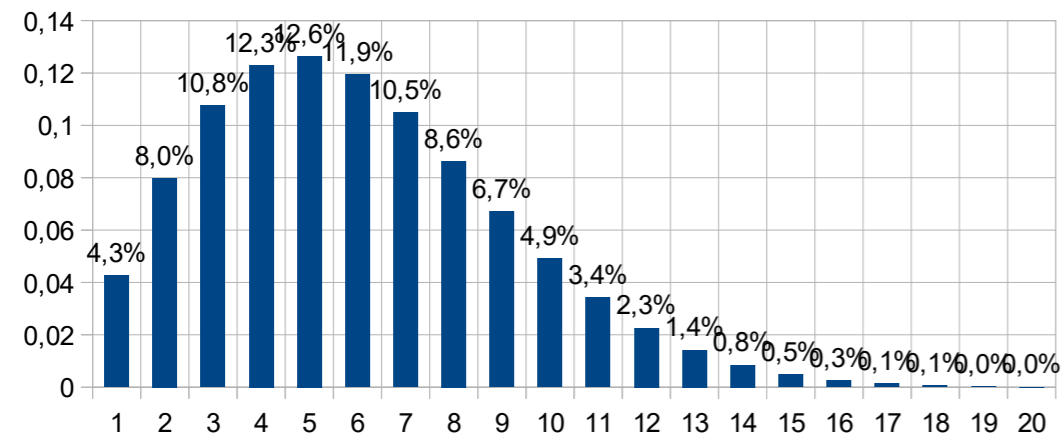
Annual Energy 18503 kWh - with average wind speed 7m/s



Annual Energy 8321 kWh - with average wind speed 5m/s



Annual Energy 13248 kWh - with average wind speed 6m/s



Annual Energy 4390 kWh - with average wind speed 4m/s

